

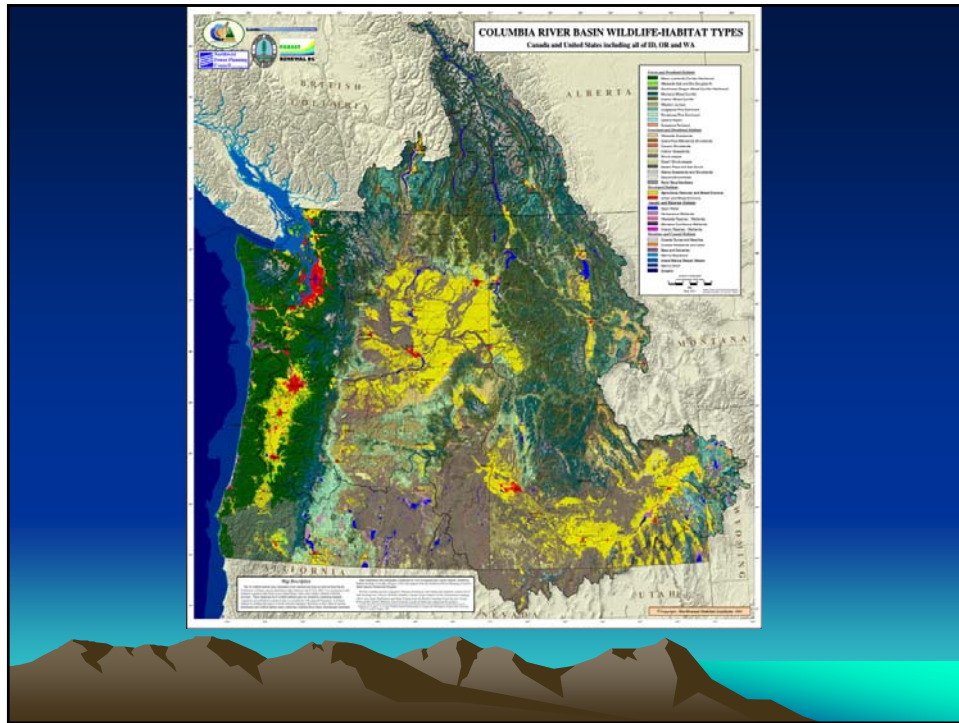
Subbasin Planning in the Columbia River Basin: What Did We Learn and What are the Next Steps?

Peter J Paquet
Northwest Power & Conservation Council
Portland State University



The Columbia River Basin

- Drains parts of seven states and the provinces of British Columbia and Alberta
- Area encompasses about 260,000 square miles.
- 62 subbasins are designated in the U.S.

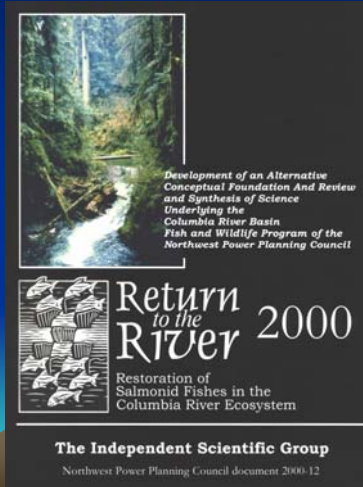


The Columbia River Basin

Columbia River Basin fish and wildlife populations have declined over time as the result of:

- habitat losses
- overharvest,
- ocean conditions and other causes

Original findings of the Council's Independent Scientific Group

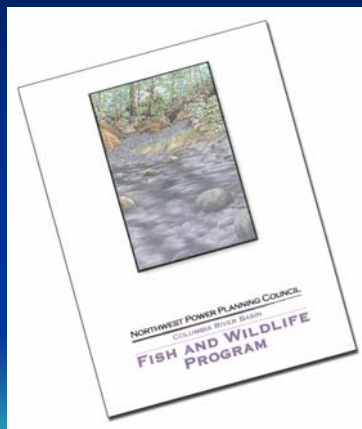


“Our review constitutes the first independent scientific review of the Fish and Wildlife Program...”

“The Program’s...lack of a process for prioritization provides little guidance for annual implementation...”

“We recommend incorporation of an integrated approach based on an overall, scientifically credible conceptual foundation...”

Response of the Council's 2000 Fish and Wildlife Program



“This version of the program expresses goals and objectives for the entire basin based on a scientific foundation of ecological principles”.

“If the vision for the basin is to be realized, it will be through successful selection and implementation of subbasin level goals, objectives and strategies”

2000 Fish & Wildlife Program

Visions, Biological Objectives and Strategies

Basin level

(Basin vision, objectives & strategies complete)

Province level/ESU

(To be developed later)

Subbasin level

(Developed through subbasin plans)

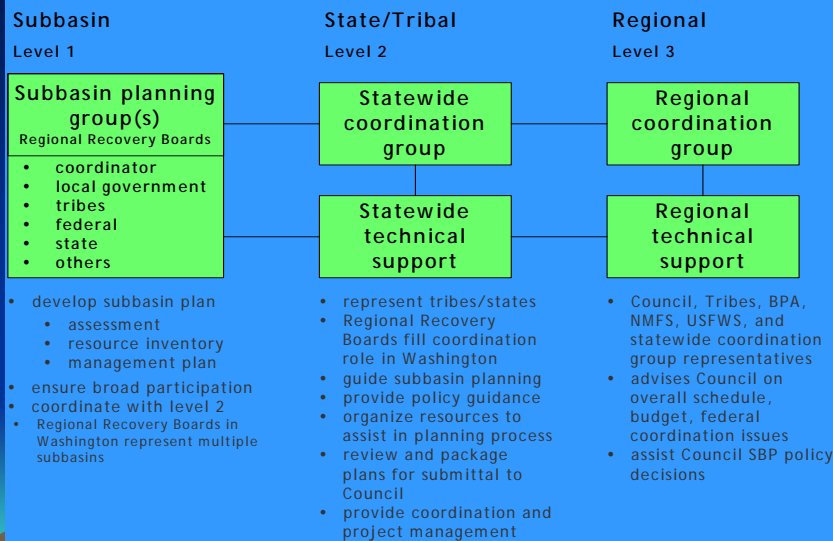
Subbasin Planning

- Defined in Council Fish & Wildlife Program
- To be based on available information
- Offered EDT, IBIS, QHA as non-mandatory tools

Purpose of Plans

- Coordinate and focus projects
- Guide BPA investment
- Guide Federal plans and other investments
- Basis for ESA Recovery Plans
- ESA Conditional Compliance
- Basis for monitoring and evaluation

Subbasin Planning Infrastructure - Functional Levels

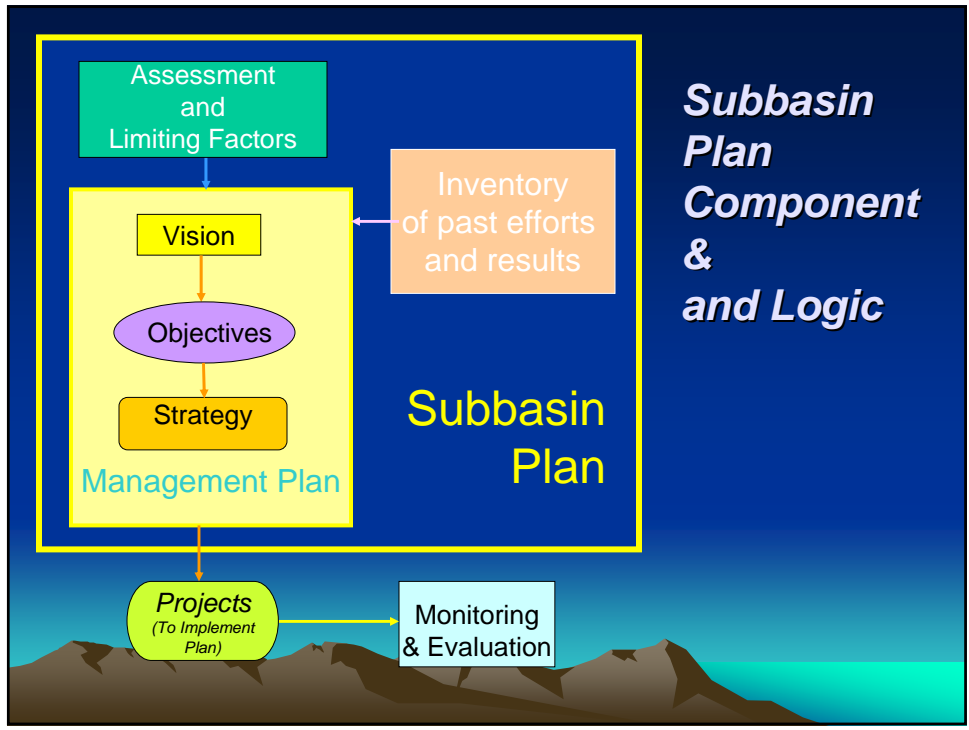
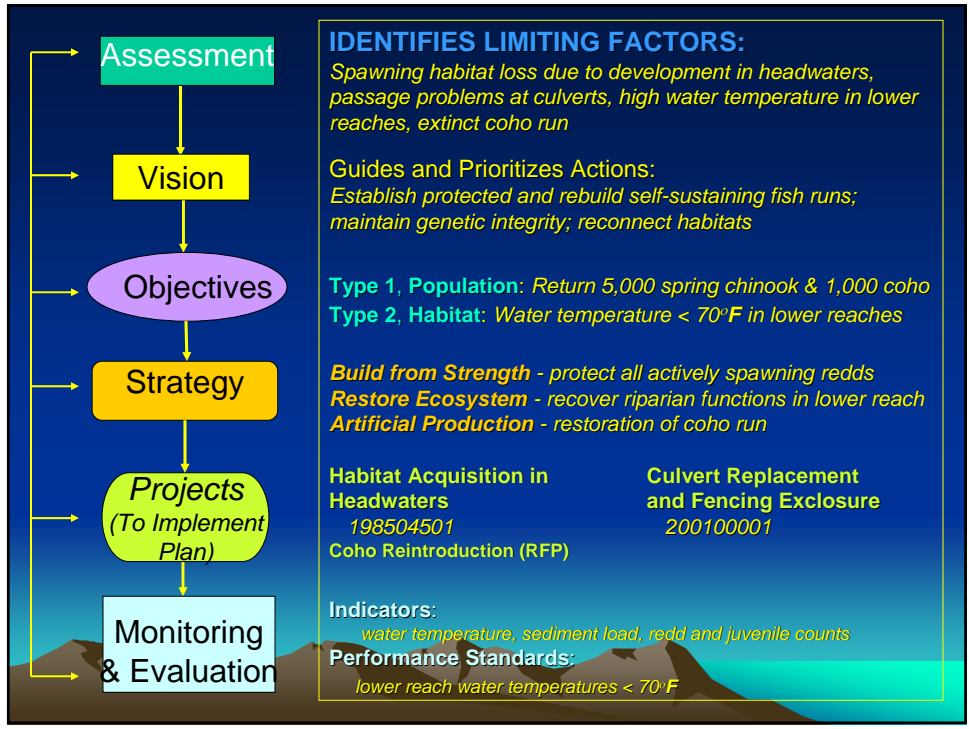


Subbasin Planning Assumptions

- Provided by Council and NMFS
- Include juvenile survival, mainstem harvest, and ocean survival
- Province-level technical advice by provided by state & regional technical teams and NOAA TRTs.

Subbasin Plan Review

- Review by ISRP with peer review groups
- Must meet ESA obligations
- Must be consistent with CRB Fish & Wildlife Program, including scientific foundation
- Review based on
 - biological objectives of plan
 - reasonable scientific judgment



Integration and Linkages: the Subbasin Plan Logic Path

- **The Subbasin Management Plan** is the end product of an integrative process that links the factors limiting production in a subbasin (identified in an **Assessment**) to a future **Vision**, through defined quantitative **Objectives** and the **Strategies** that will be used to achieve them.
- **Strategies** will be implemented via **Projects**.
- **Monitoring and Evaluation** will adaptively assess and guide projects.

Who developed subbasin plans?

- ***Coordinated by states and tribes with local governments***
(examples are Washington regional recovery boards and Oregon watershed councils)
- ***Transboundary Subbasins – Canadian Partners***
- ***Involves NMFS Technical Review teams for ESA recovery planning***
- ***Funded by the Bonneville Power Administration***
- ***Administered by the Power Planning Council***

Results

- 59 Subbasin Plans Delivered on May 28th, 2004
- Independent Science Review Completed
- Public Comment Completed
- 29 Subbasin Plans Adopted – Dec. 2004
- XX By February 16, 2005

Things That Worked?

- Locally driven planning process
 - “bottom-up” approach
 - “ask, don’t tell”
- Adherence to Schedule & Budget
- High quality assessments
- Greater uniformity of regional knowledge base
 - Fish and wildlife
 - Inventories
- Enhanced project review & selection

Things To Work On

- Fish and Wildlife Models
- Integration of terrestrial and aquatic components
- Maintaining local planning structure
- Coordination with ESA Planning
 - Biological Opinion
 - Recovery Plans

What's Next?

- Subbasin Plan Integration
 - “Rollup”
- Monitoring & Evaluation
- Information Management
- Project Implementation

What's in it for fish and wildlife?

- Improved habitat and greater abundance of species and genetic diversity.
- Plans will give context to where mitigation projects should occur and provide assurance that the most beneficial projects are being undertaken

What's in it for government?

- Help agencies dealing with fish & wildlife, water, land, hydropower, & ESA build better relations & deeper understanding with the public about complex & controversial environmental issues.
- Promote improved, collaborative planning consistent with local & regional goals & direct limited funding to fish & wildlife projects with the highest probability of success.

*Here's how to
find out more:*

- Go to **www.subbasins.org** and find your subbasin in the pull-down list of subbasins on the left side of the page.

