

East Powell Butte Floodplain Restoration Project

Brownwood Phase

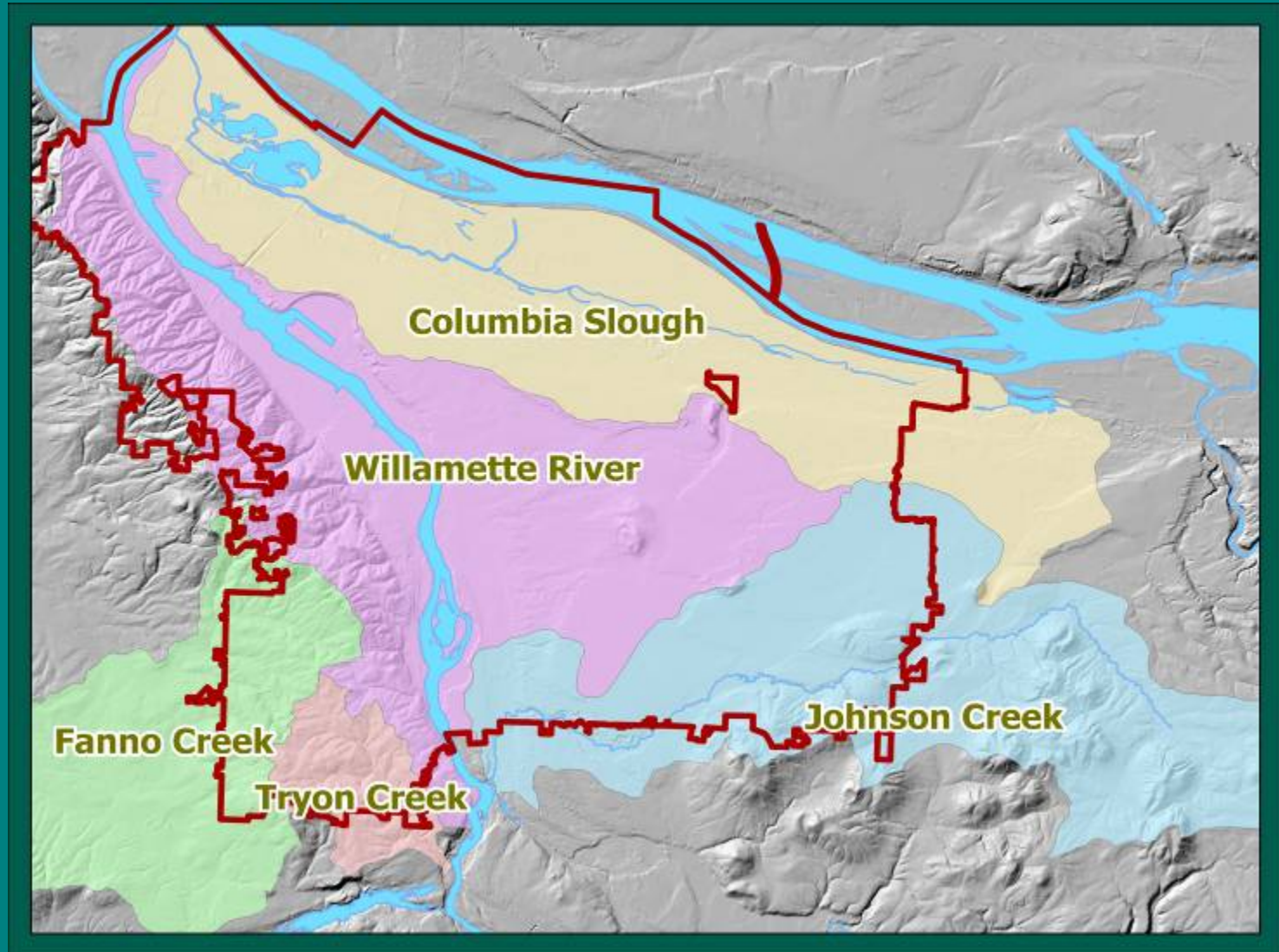
Presented by Maggie Skenderian
City of Portland Bureau of
Environmental Services

Design Services: inter-fluve, GreenWorks
Construction Services: Brandt Construction
Photography: Bruce Mac Gregor

Presentation Overview

- Brief history of Johnson Creek
- Johnson Creek Restoration Plan
- Project Design
- Project Construction

Portland's Watersheds



Historic Impacts to the Hydrology of Johnson Creek



Cazadero – Estacada Train on the Springwater Division Line Established in 1903

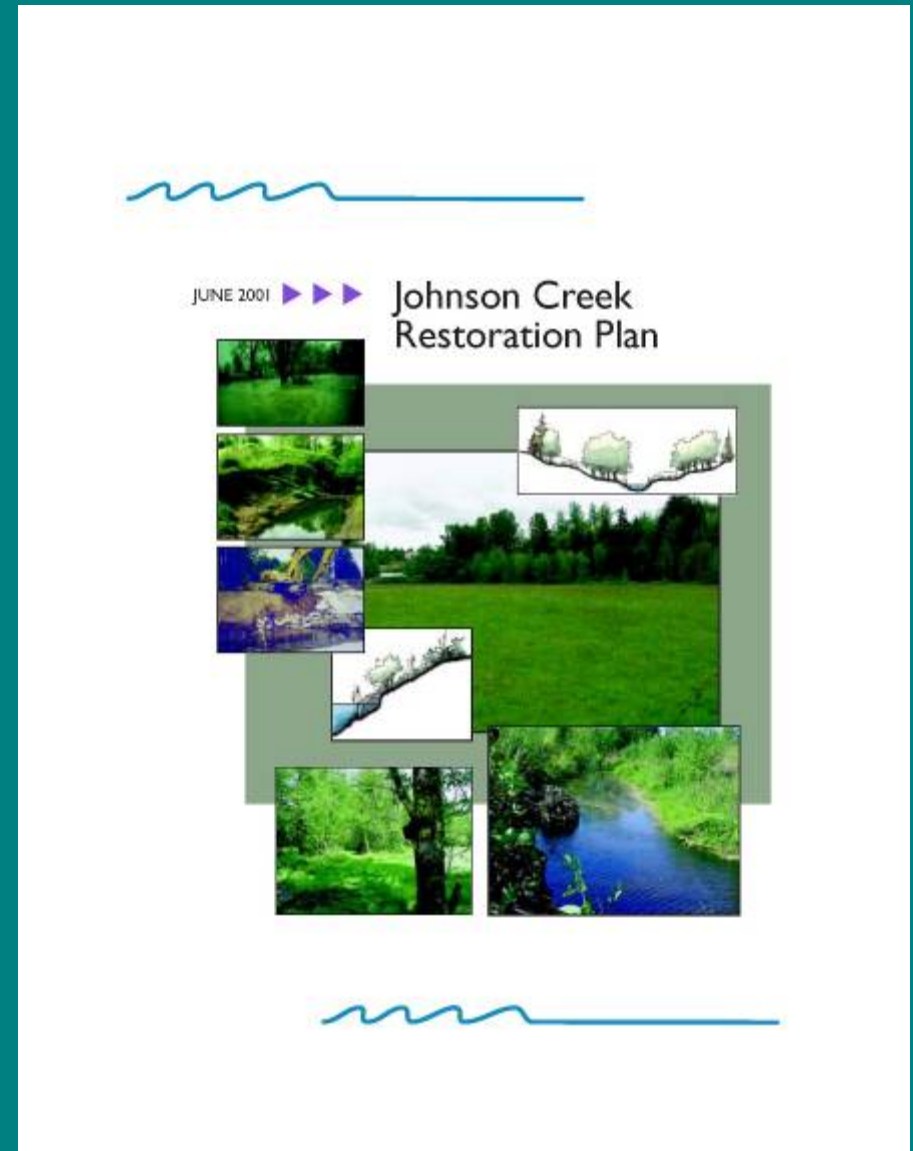


WPA Channelizing and Rock Lining Johnson Creek 1930s

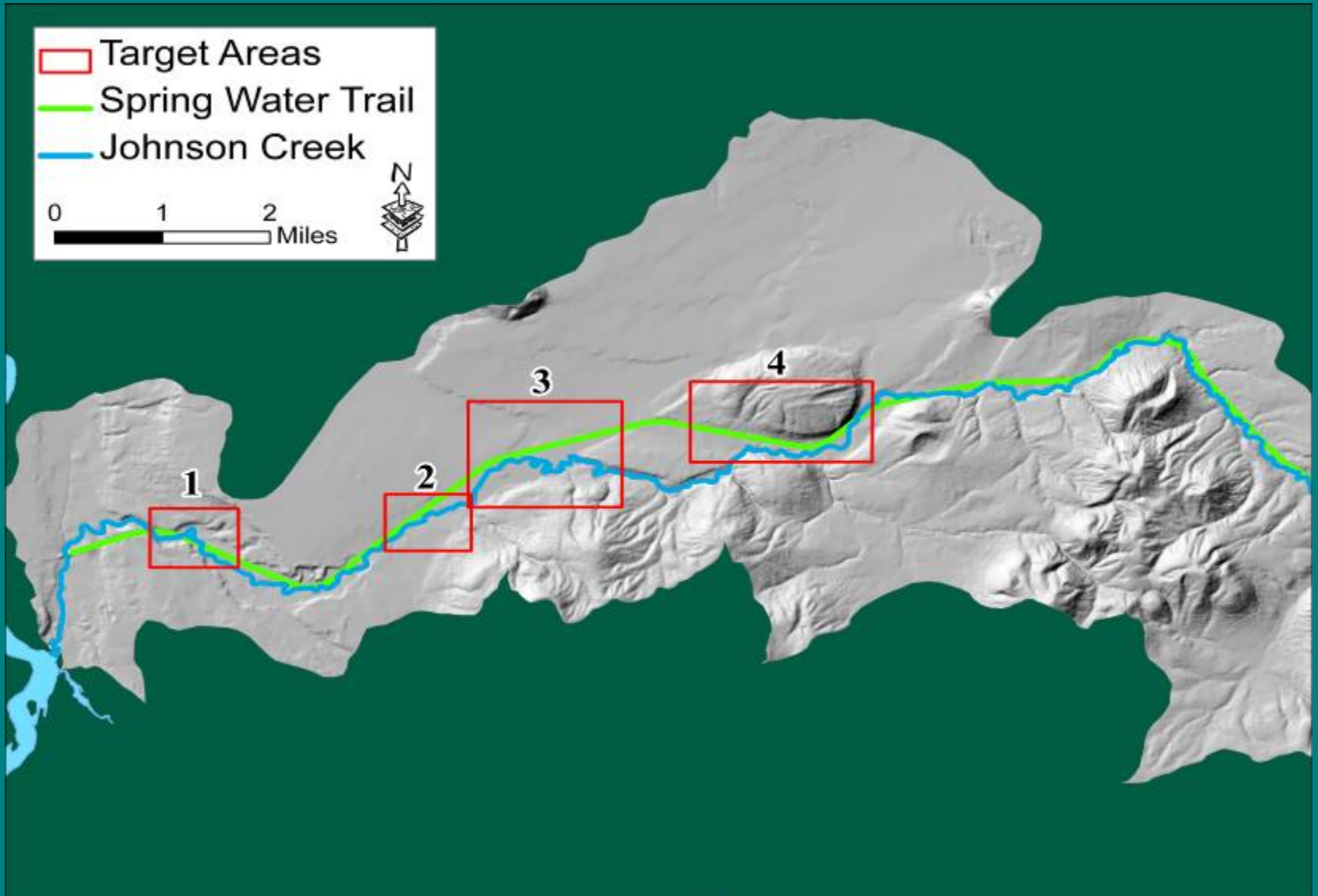


Johnson Creek Restoration Plan

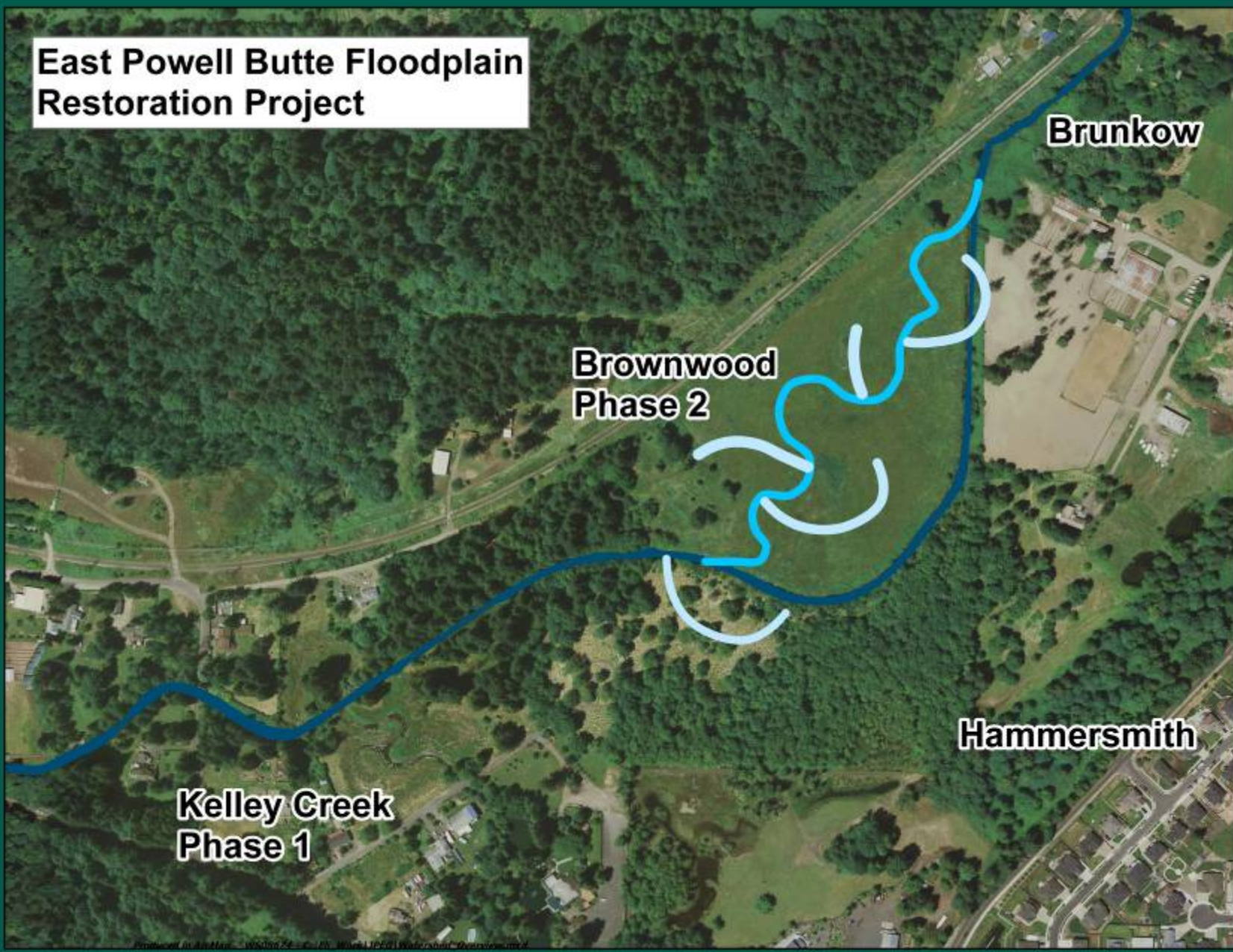
- Establishes conceptual design for projects in 58 reaches of the 26-mile stream system
- Addresses nuisance flood mitigation (10-yr return period), water quality and habitat goals comprehensively
- Published in 2001 and endorsed by Portland City Council



Restoration Plan Target Areas



**East Powell Butte Floodplain
Restoration Project**



Brunkow

**Brownwood
Phase 2**

Hammersmith

**Kelley Creek
Phase 1**

Pre-Construction Conditions



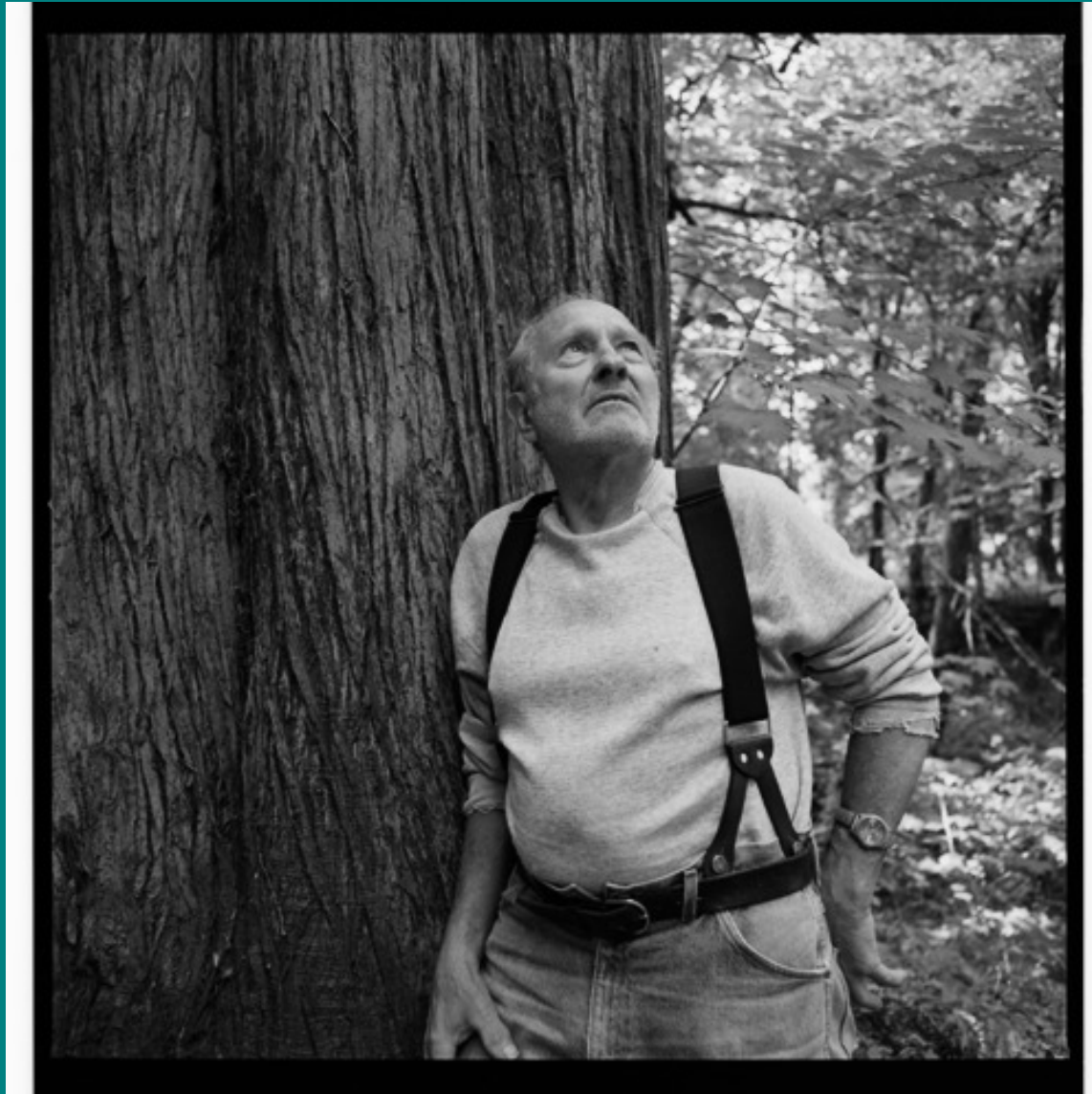


Project Kick Off



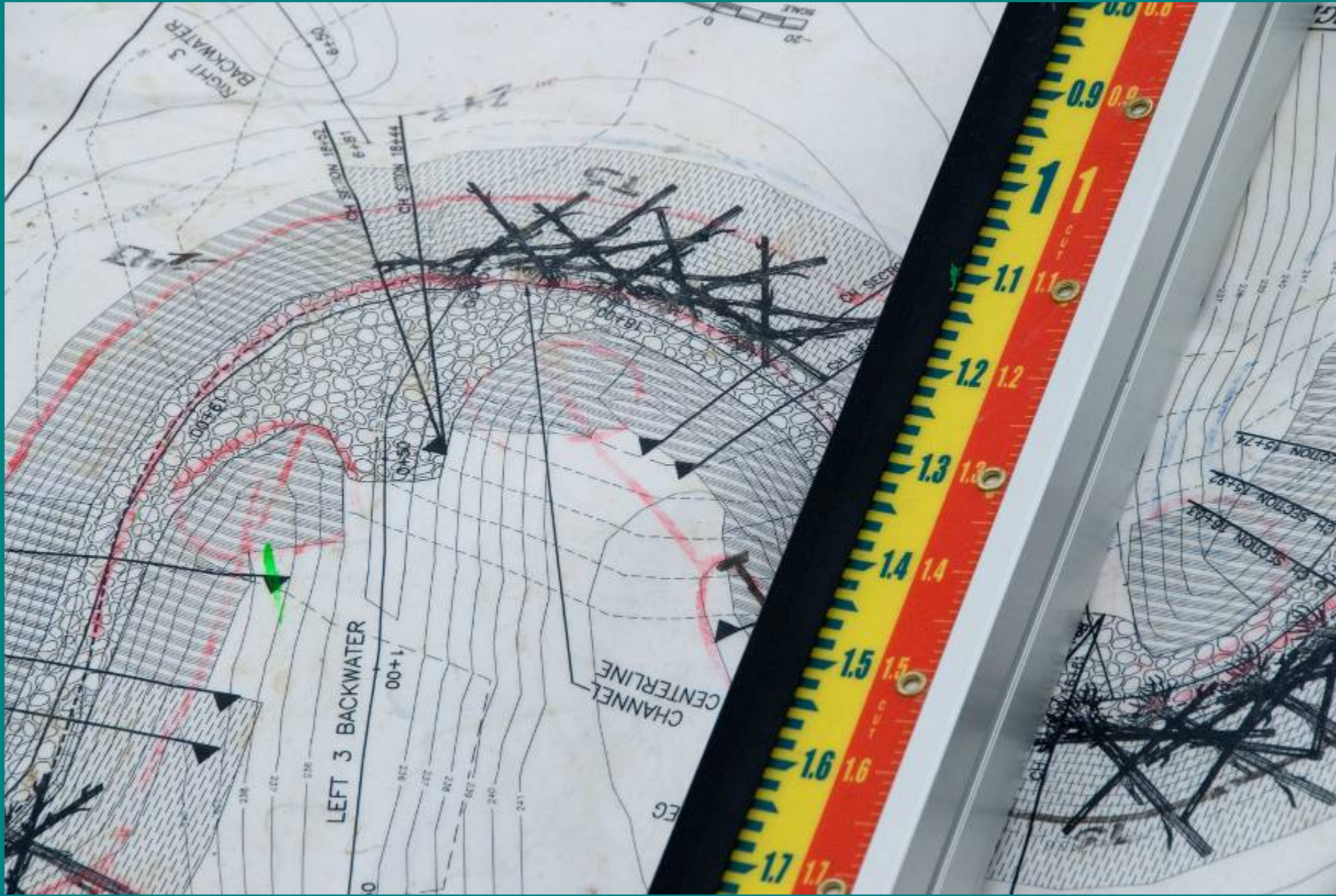


Community Investment



Construction Begins May 2007

































Fish Rescue - August 6 & 7, 2007

Total fish = 1390



Native

- Coho = 1 (juvenile)
- Steelhead = 1 (juvenile)
- Cutthroat trout = 2 (1 juvenile and 1 adult)
- Lamprey = 660
- Sculpin = 332
- Speckled dace = 17
- Redside shiner = 325
- Large scale sucker = 24
- Crawfish = 193

Nonnative

- Bluegill = 2
- Largemouth bass = 26

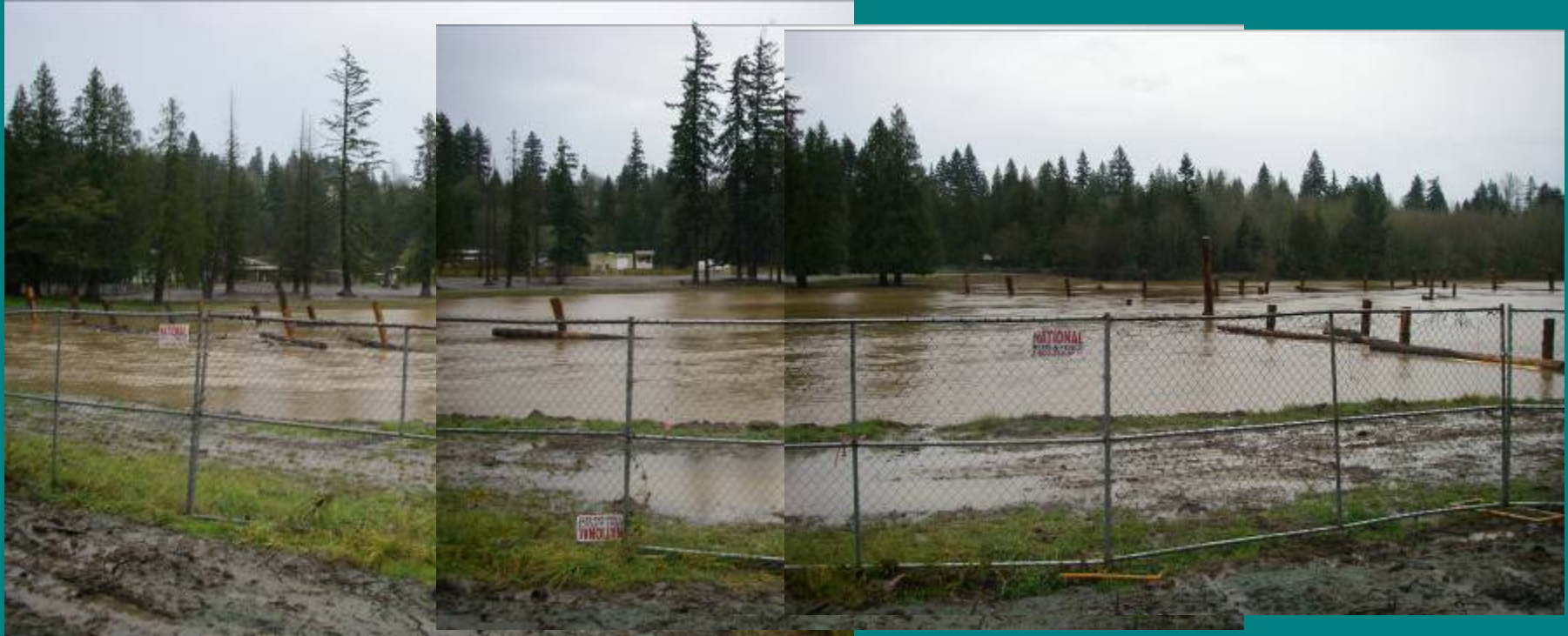


**12" Native Cutthroat
Fish Rescue - August 2007**

















Brownwood Before and After

