



BONNEVILLE
ENVIRONMENTAL
FOUNDATION

Retrospective Assessment of Select Revegetation Projects in the Willamette Basin, Oregon

Kendra Smith, Ecologist / CFM | RRNW | 2.2.2010

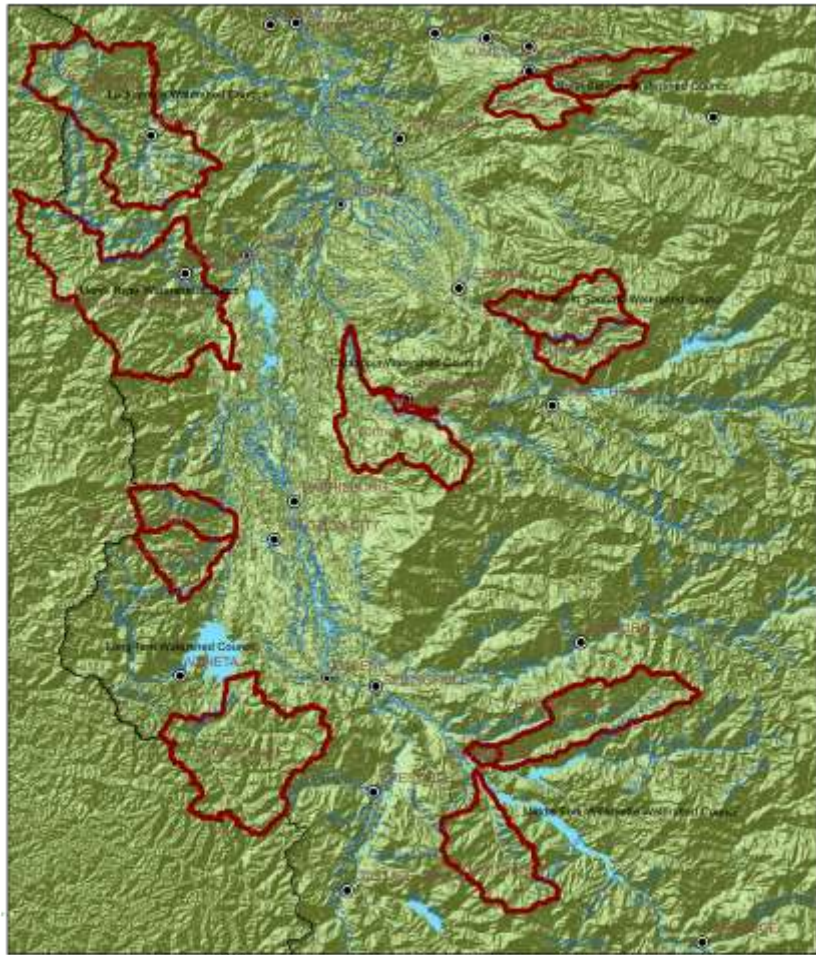


Presentation Objectives



- Model Watersheds Program context
- Retrospective assessment observations
- Application in your watershed

Willamette Model Watershed Program



- Strategic Investments
- Building Momentum
 - Quicken the Pace
 - Expand the Scale
 - Increase the Effectiveness



Retrospective Assessment

- Look back, before casting forward
- Understand capabilities and challenges
- Everyone, Be Smarter Tomorrow



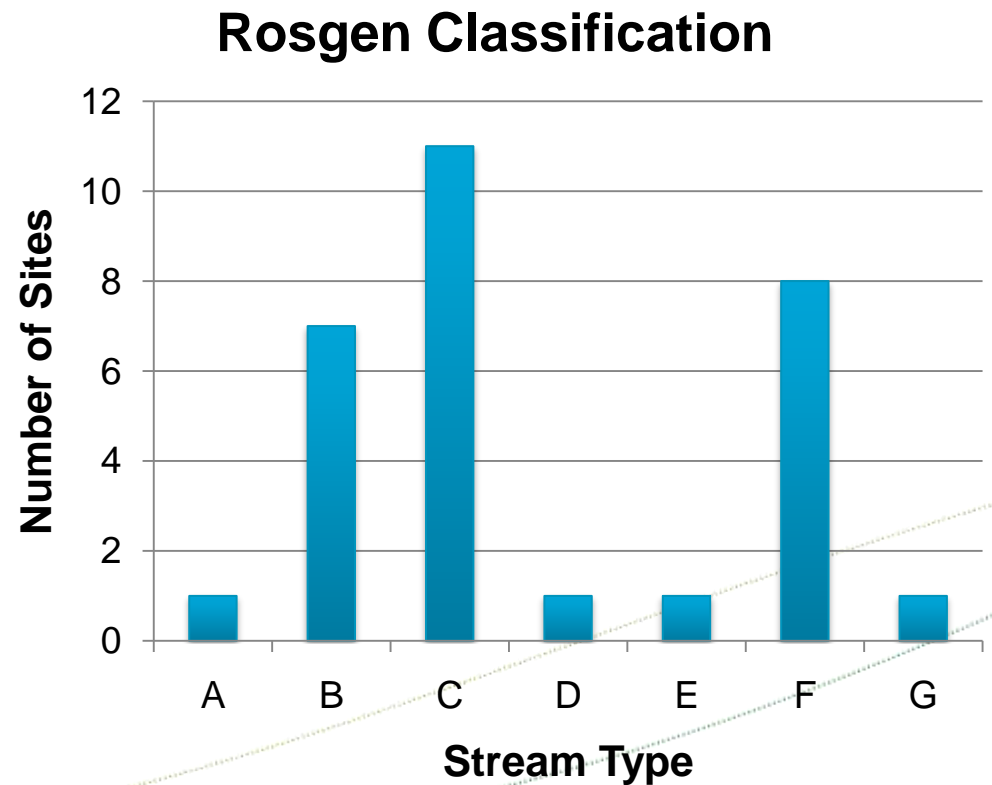
Study Area and Approach

- Riparian revegetation focus
- 30 sites in watersheds of:
 - North / South Santiam
 - Calapooia
 - Long Tom
 - Middle Fork Willamette
- Used a modified rapid stream assessment technique



Stream / Riparian Conditions

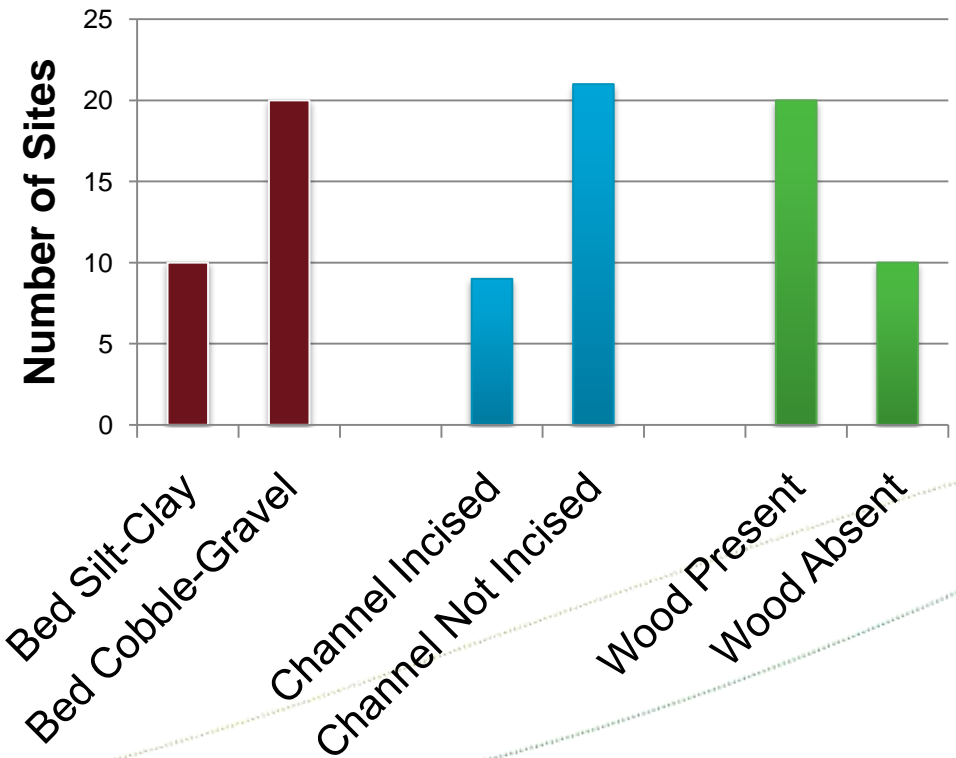
- Streams, excluding river sites (n=25)
 - Average wetted width =14.25ft
 - Average bankfull width =20.74ft



Stream / Riparian Conditions



Channel Characteristics



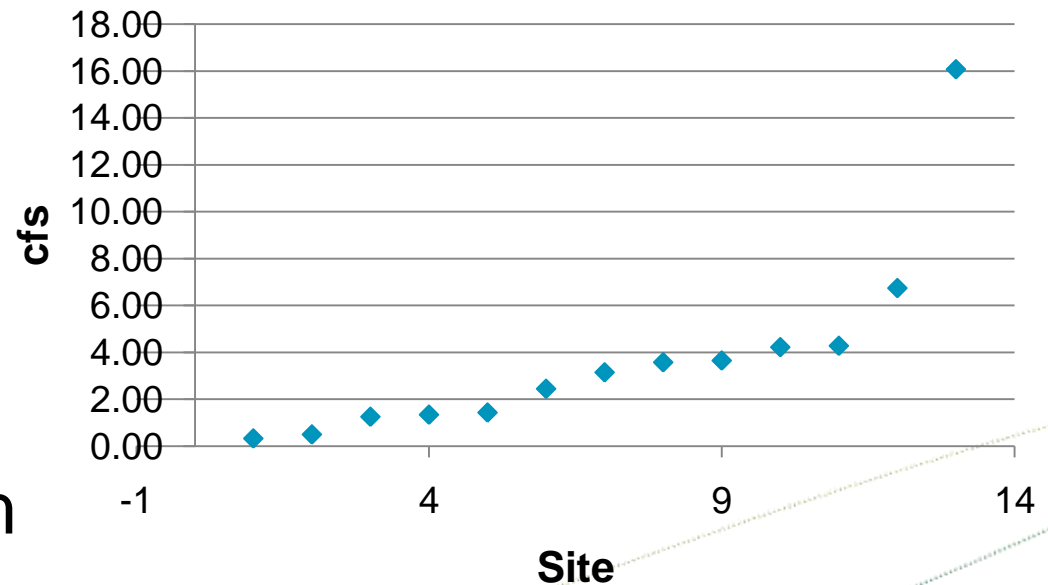
Stream / Riparian Conditions

- No water at 5 sites



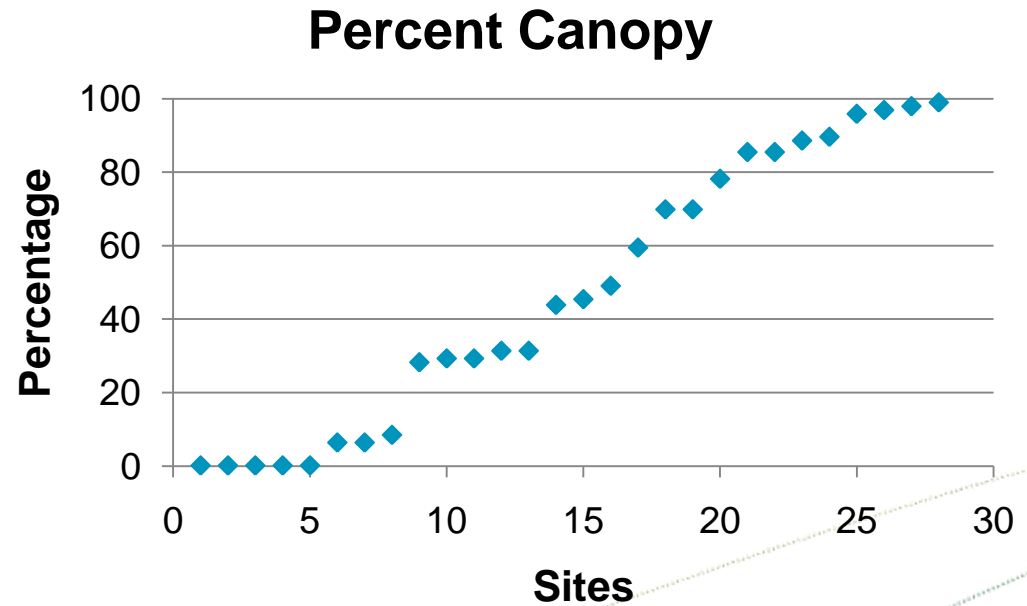
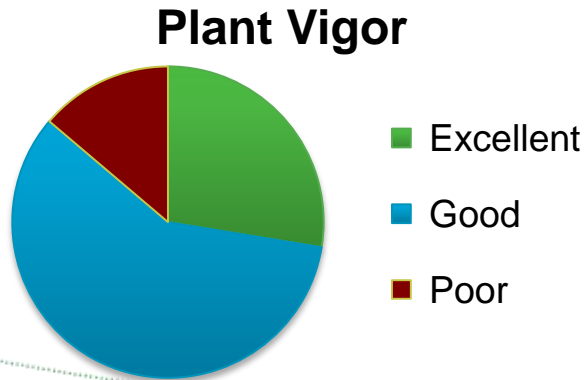
- Average water depth
 - Riffle (n=17) was 0.64ft
 - Pool (n =4) was 2.95 ft

Estimated Flows (cfs)



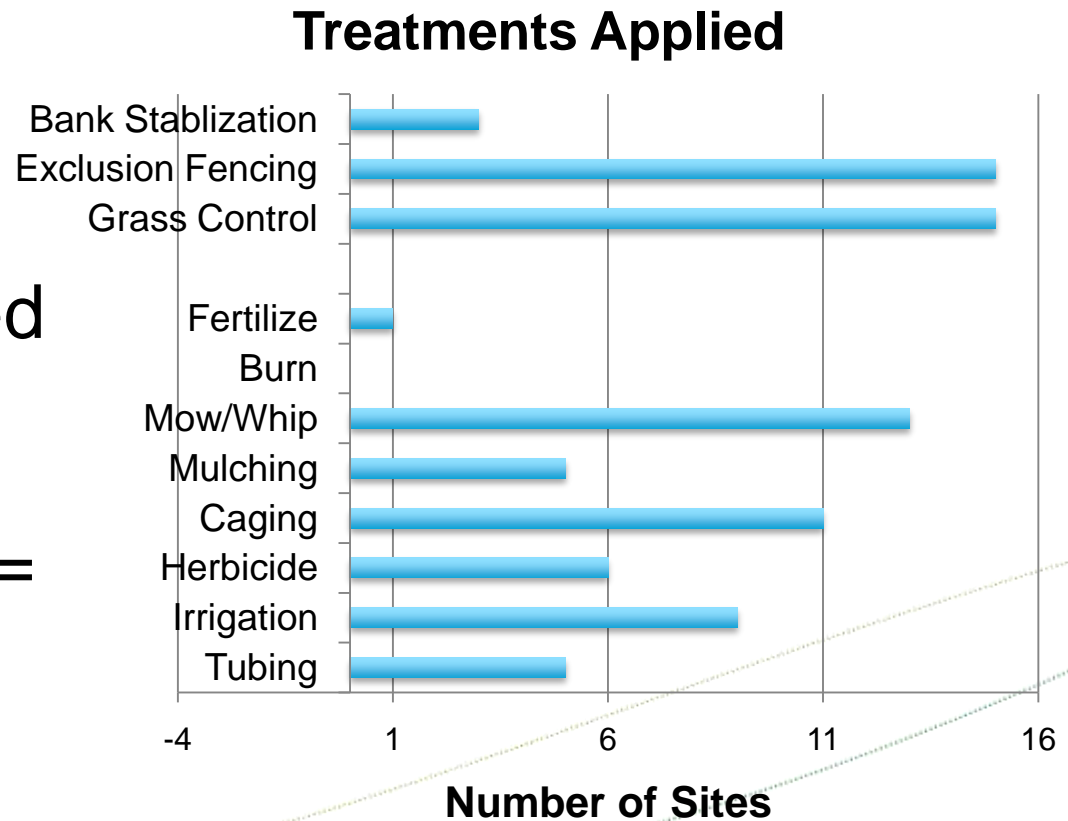
Stream / Riparian Conditions

- Average Canopy
- (n=28) was 47.35%



Management Practices / Impact

- Average buffer width = 52.83ft
- Total Miles Planted = 5.96 miles
- Acreage Planted = 37.85 acres

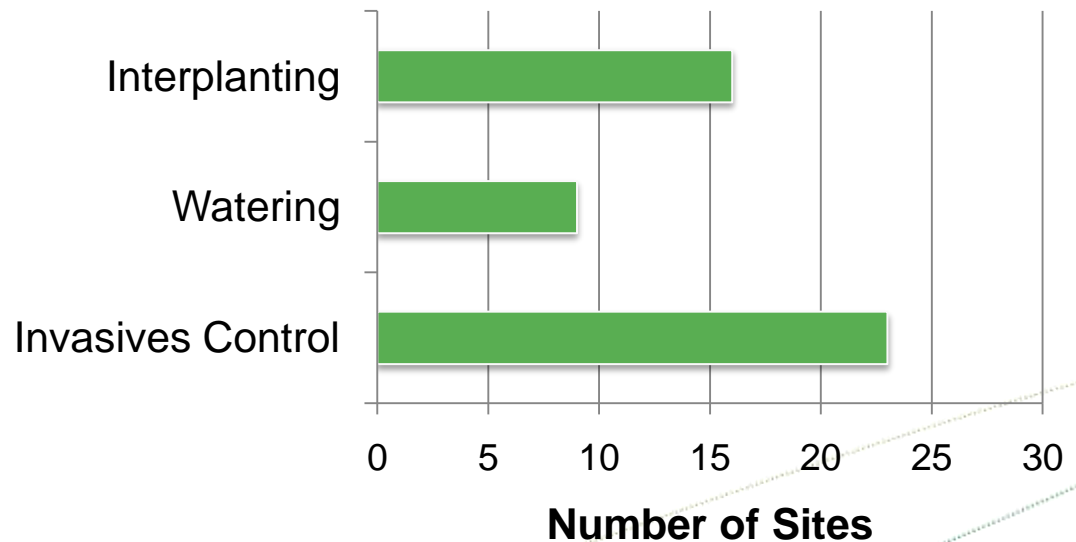


Adaptive Management - Project Needs

Risks to success

- Lack of establishment funds
- Lack of treatment at right time
- Planting densities too low

Treatments Needed



Landowner / Council Relationships

- Community trust built by Councils
- Landowner profiles
 - Long term owners
 - Conservation ethic
 - Half were retired
- Future landowners?



Economic / Funding Constraints



- Lower cost, higher impact solutions
- Granting cumbersome, time consuming
- Funding diversity is needed

Challenges and Opportunities

- Tracking projects
- Technical knowledge
- Funding for full project
- Reliance on landowners



In Conclusion

- Long way to the tipping point of improved stream health
- Retrospective is a good grounding tool
- Maintain the gains
- Need infrastructure to foster uplift and momentum

