

A Flexible and Cost-Effective Approach to Installing Large Wood Assemblages in Fine Grained Substrates

Presenter: Matt Brennan PE – Clean Water Services

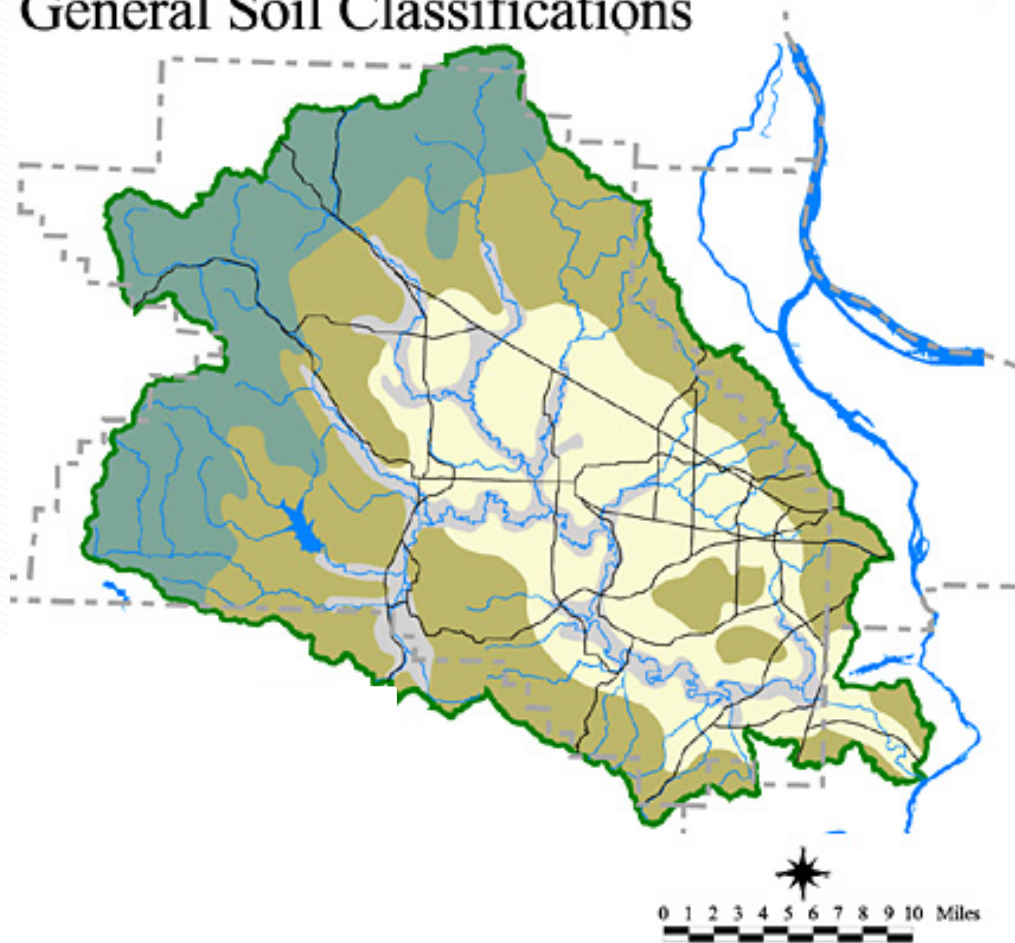
with contributions from:

Abigail Rhode PE, Matt Klara PE – Herrera

Anil Devnani – Clean Water Services

Tualatin River Watershed General Soil Classifications

*Tualatin River
Watershed Council
Atlas Project*



Data Source: USDA, Soil Survey of Washington County (1982)
Tualatin River Watershed Information System CD (1998)

Tualatin River Watershed

- Basinwide Riparian and Floodplain Enhancement



Design Goals

- Complexity and Roughness



Project: Lower Bronson Creek

Design Goals

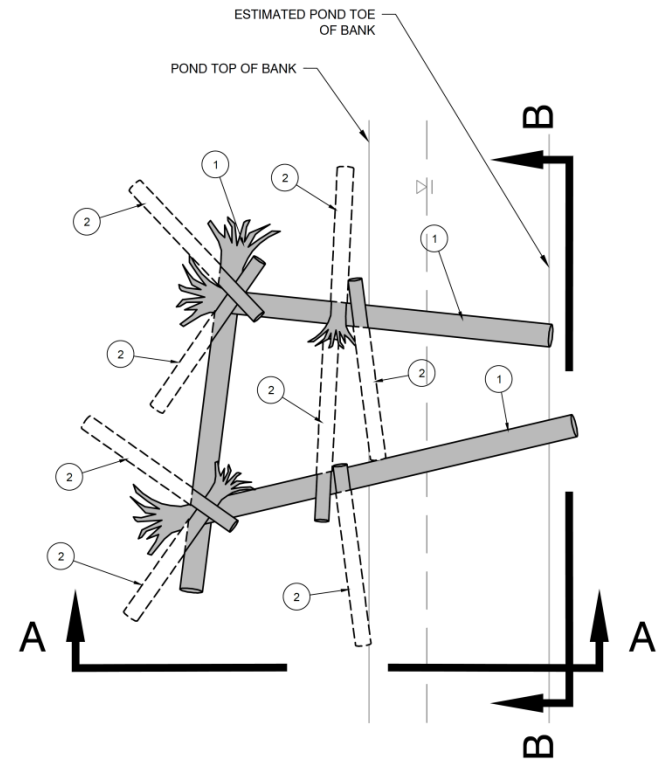
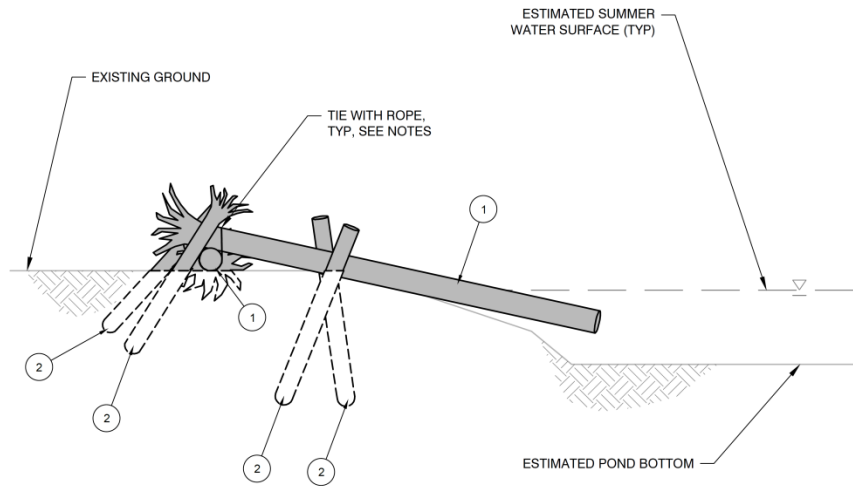
- Stability



Project: Tualatin River Farm

Design Approach

- Typical detail with key structural elements and criteria



Design Approach



Project: Springville Creek

Implementation Approach



Project: Tualatin River Farm

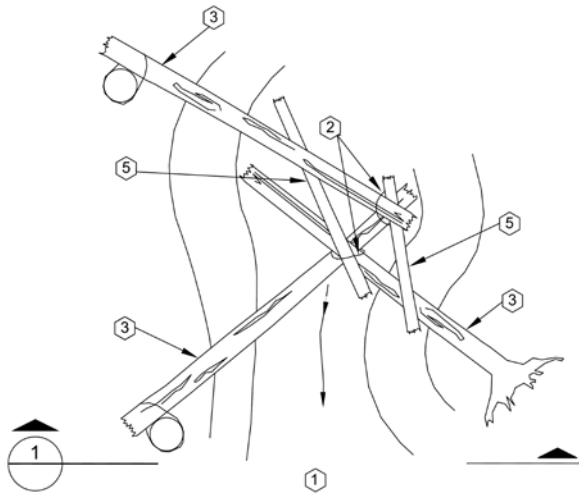
Implementation Approach

- Flexibility and Complexity



Project: Tualatin River Farm

Upper Bronson Creek



WOODY DEBRIS COMPLEX - TYPE 1, TYP.

DETAIL PLAN

SCALE: NTS



Springville Creek

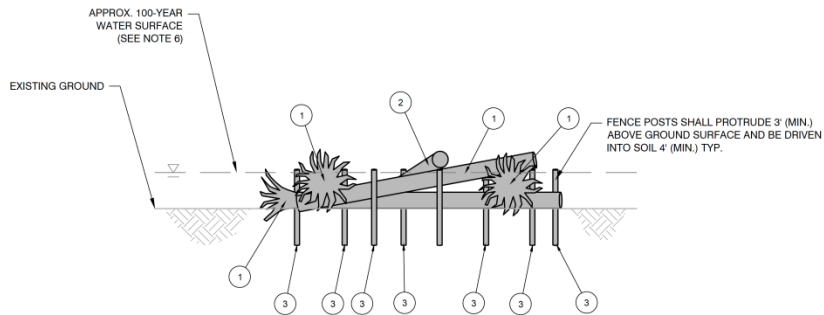
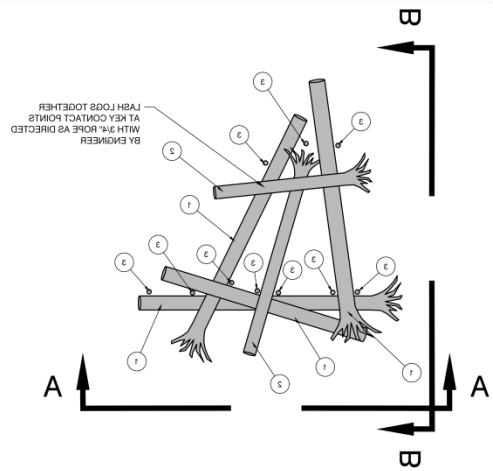


Springville Creek



Source: USGS (S. Rounds)

Lower Bronson Creek



Tualatin River Farm



Acknowledgements

- Clean Water Services: Jared Kinnear
- Clean Water Services Field Operations Crew
- Herrera: Kate Forester, Kristina Gifford
- Metro: Brian Vaughn
- Endicott Woods
- Biohabitats: Matt Koozer