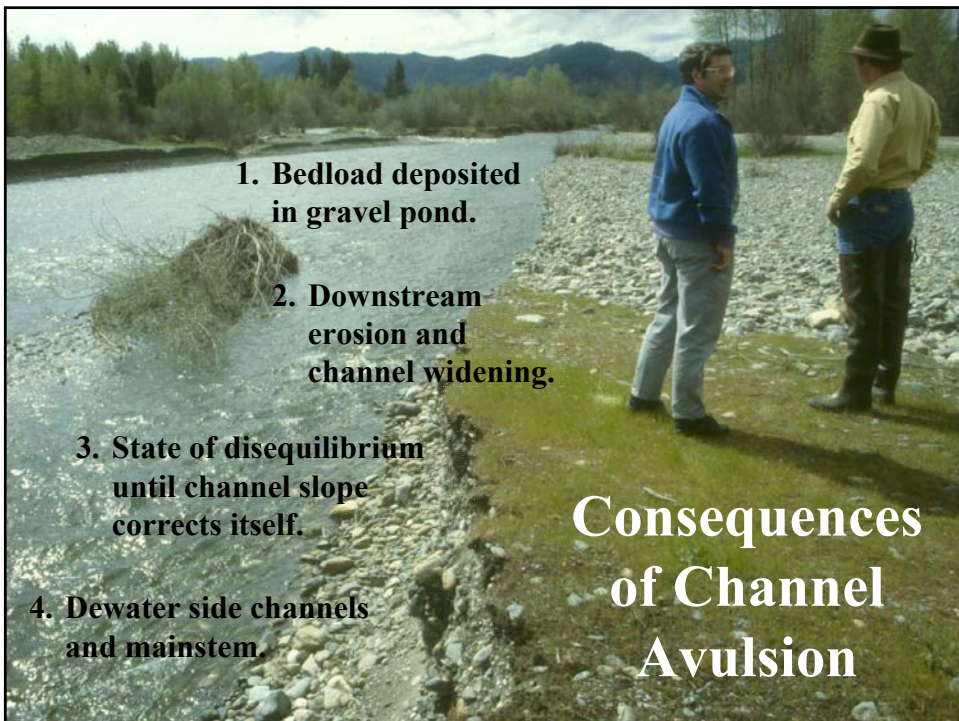




**Floodplain mining risks to channel stability.**

**Restoration potential inside and outside of the channel migration zone.**

**Rogue River Stakeholders Project – How we reduced the risk of pit capture.**



**1. Bedload deposited in gravel pond.**

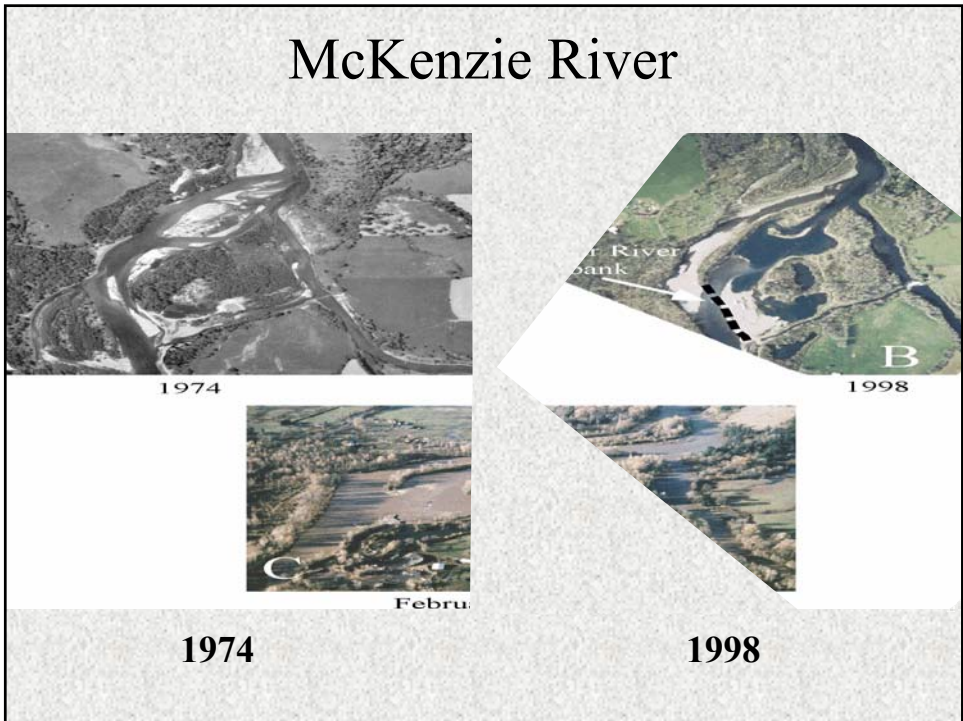
**2. Downstream erosion and channel widening.**

**3. State of disequilibrium until channel slope corrects itself.**

**4. Dewater side channels and mainstem.**

**Consequences of Channel Avulsion**





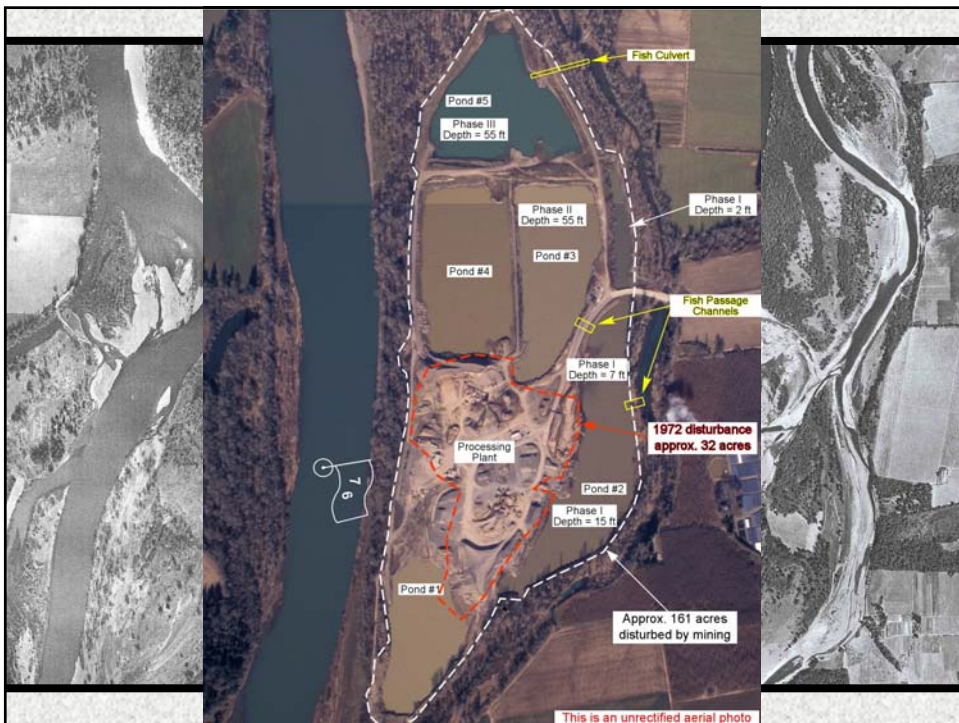
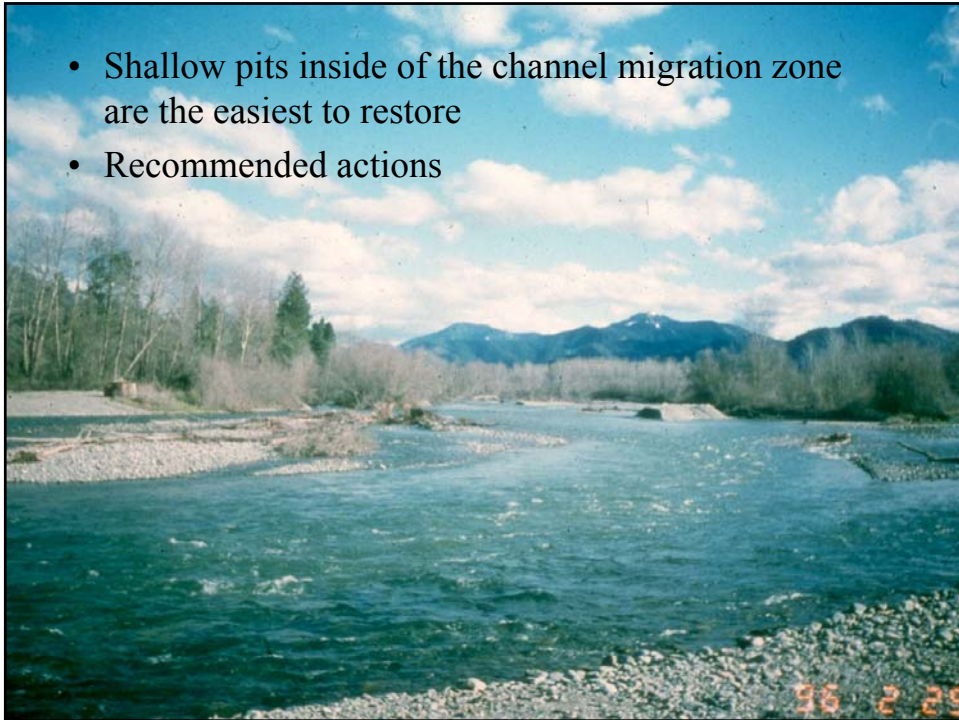


## Evaluating Restoration Potential



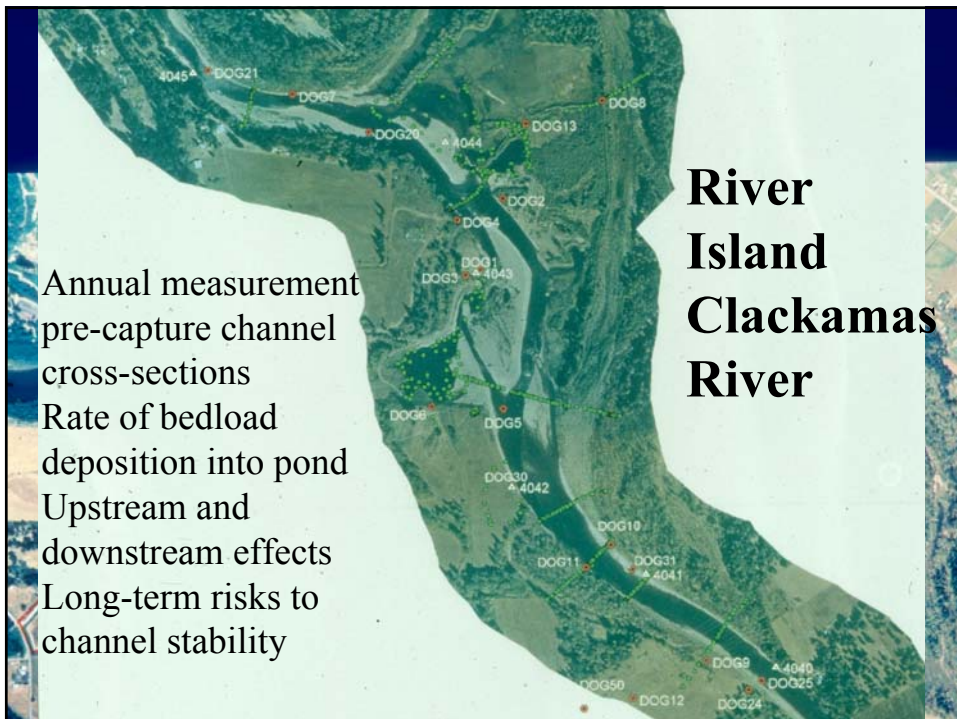
- What is needed in the local reach?
- Habitat protection or habitat restoration?
- What will provide the best benefit to fisheries?

- Shallow pits inside of the channel migration zone are the easiest to restore
- Recommended actions



# Restoration Potential of Deep Ponds Inside Channel Migration Zone

- Timing of restoration work
- Isolated pit captures
- Multiple pit captures





**ROGUE RIVER STAKEHOLDERS GROUP**

229 Broadalbin Street SW, Albany, OR 97321-2246  
Phone: (541) 967-2039  
Fax: (541) 967-2075

- Create process and framework to solve problem
- Design an integrated river and floodplain management plan to protect the river and individual landowner management goals
- Foster community support
- Find funding
- Monitor and evaluate plan implementation

# Landowners

Rogue Aggregates

Ray and Tom White

Vern Gebhard

ODOT

## Adjacent Landowners

- Bob Mace
- Ray and Tom White
- Bear Creek Orchards
- ODFW
- BLM
- Nature Conservancy

## Agency Involvement

Division of State Lands

Jackson County

Jackson Co. S&WCD

NOAA Fisheries

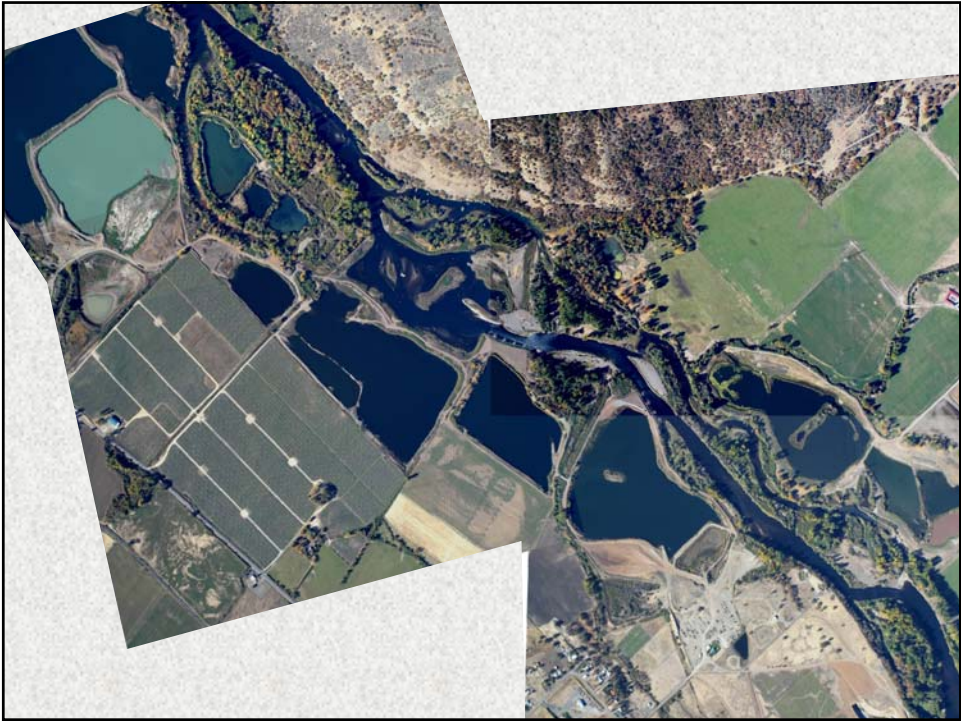
Bear Creek Watershed Council

Oregon Fish & Wildlife

US Corps of Engineers

US Fish & Wildlife Service

Water Resources





# Gebhard Bank



This is an unrectified aerial

Level  
part  
06.1

## Phase 2 Construction

Oregon Dept. of Geology and Mineral Industries

